



FEATURES

- Efficient direct AC electric drive ●
- Fully proportional remote control ●
- Maintenance free AGM batteries ●
- Hazard lights front and rear ●
- Switchable motion alarm ●
- On board diagnostics ●
- Adaptable and extendable platform ●
- LCD information screen on remote control ●
- Smart auxiliary output socket ●
- Automatic gradient/speed monitoring ●
- Non-marking tracks ○
- Wide range of accessories ○
- Infinitely rotatable platform ○

○ = Optional ● = As Standard

The 4000 PRO from ACONDA offers an unrivalled method of transporting heavy goods through confined spaces. At only 1m wide, it has a maximum capacity of 4,000kg and can climb gradients up to 45° with a reduced load.

The 4000 PRO has configurable extendable support bars fitted as standard, and the option of remote-controlled platform rotation. This enables the user to configure the platform and safely rotate loads to improve manoeuvrability in tight areas, and to enable precise load positioning without any effort.

As with all PRO models, this model features gradient monitoring to increase safe operation when working on steep inclines, information feedback to the remote control, and a 24v auxiliary output to power certain accessories.

DIMENSIONS

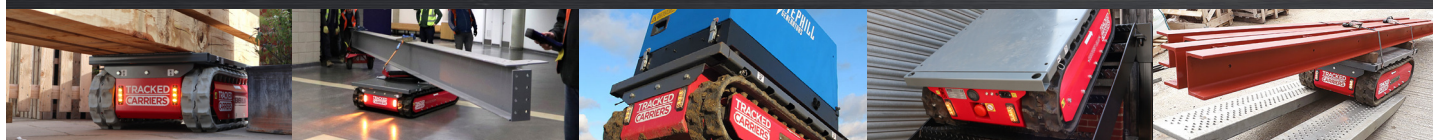
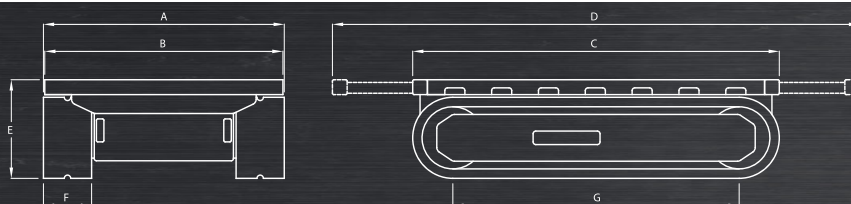
Width overall (A)	1000mm
Width of bed (B)	970mm
Width extended	2070mm
Length of bed/overall (C)	1790mm
Length extended (D)	2860mm
Height (E)	500mm
Track width (F)	230mm
Track length on ground (G)	1400mm
Ground clearance (centre)	100mm

CAPACITIES

Max capacity on level ground	4000kg
Max capacity at max gradient	1000kg
Max gradient	45°
Max side slope	30°
Max speed	2.5km/h
Unladen weight	970kgs

POWER

Power (max)	6.0kW
Voltage	24V
Battery capacity	200Ah
Charger input	110V-230V



Contact Us: Aconda, Unit 16, Crittall Road, Witham, Essex, CM8 3DR, UK
Telephone: +44 (0)1621 810999 **E-mail:** info@aconda.com **Web:** www.aconda.com